



hp remote operations
facility software

managing hp NonStop
servers from a remote
location

a product description
from hp

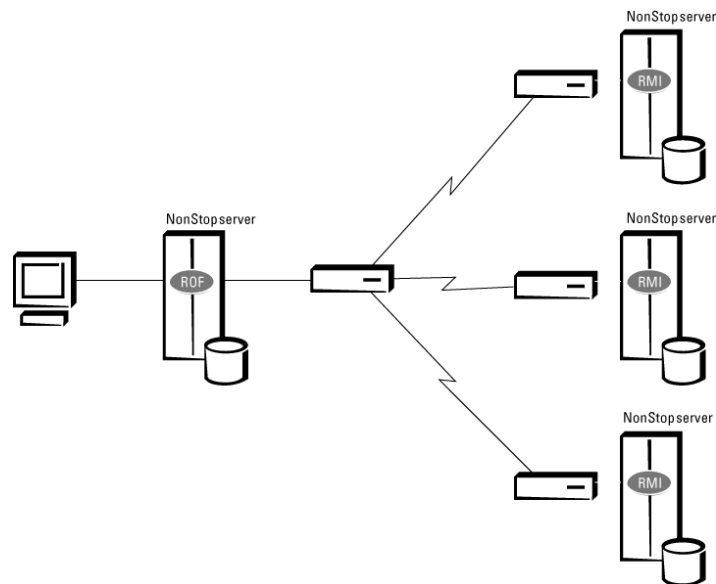
features at a glance

- Dial-up access to remote sites
- Access to low-level system management functions
- Access to remote applications that use conversational interfaces

The HP Remote Operations Facility (ROF) product provides dial-up access to a remote HP NonStop™ server from a central site. With the ROF product, you can perform low-level system management tasks, such as cold-loading or reloading system software and running hardware diagnostics. In addition, you can access remote applications that use conversational interfaces.

dial-up access to remote sites

Through a synchronous modem and dial-up line connected to your NonStop server at a remote site, the ROF product lets you perform a wide variety of tasks if the system software is not running or if your network is unavailable (see figure).



Through a dial-up line connected to your NonStop server at a remote site, ROF software lets you perform low-level system management tasks, including cold-loading and reloading system software. In addition, you can access remote applications that use conversational interfaces, and, through the server's remote maintenance interface (RMI), run hardware diagnostics.

access to low-level system management functions

With the ROF product, you can perform the low-level system management tasks that can be done from a service console, including cold-loading or reloading system software.

In addition, you can access NonStop servers at remote sites to troubleshoot hardware problems and download maintenance interface code. Through the server's maintenance interface, you can also access the hardware diagnostic services of the HP Tandem Maintenance and Diagnostic System (TMDS).

access to remote applications that use conversational interfaces

Using the TACL language for NonStop systems, ROF enables you to start a remote command interpreter to conduct a wide variety of tasks, including running utilities, starting applications, and changing a server's configuration. You can enter commands as if you were a local user on the target server. For security, an operator must log on as a valid user of the target server.

specifications

system requirements

hardware	Any NonStop server Bit-synchronous controller (on the host server) for communications with the target server
software	NonStop Kernel operating system, any supported software release EnvoyACP/XF; NonStop 6100, 6105, 3605, or 3650 controller; a modem, dial-out line; autocal unit (optional) Codex 2233 intelligent modem

ordering information

<i>product ID</i>	<i>description</i>
9986	Remote Operations Facility software

For more information, go to www.hp.com/go/nonstop.

June 2002, first published 1999. All product names mentioned herein may be trademarks of their respective companies. HP shall not be liable for technical or editorial errors or omissions contained herein. The information is subject to change without notice. The warranties for HP products are set forth in the express limited warranty statements accompanying such products. Nothing herein should be construed as constituting an additional warranty.

Printed in the U.S.A. 02-0426

©2002 Hewlett-Packard Company

