

HP OpenView NonStop Server Performance Management software

Data sheet



Key features and benefits

- Real-time performance monitoring
- Performance alerts
- Historical trend analysis and capacity planning
- Business applications monitoring
- Integration with other HP OpenView solutions

The HP OpenView suite is a comprehensive business-driven management solution that monitors, controls, reports on, and automates corrective actions for the health of all parts of a managed infrastructure. This industry-leading software provides a service management environment that enables monitoring of service level objectives.

A new member of this suite, HP OpenView NonStop Server Performance Management is an out-of-the-box solution that provides seamless integration for managing HP NonStop servers with HP OpenView Operations software. A natural extension of OpenView software, this new product offers NonStop server customers true end-to-end enterprise management.

OpenView NonStop Server Performance Management software provides extended capabilities for real-time monitoring, performance analysis, and capacity planning. It is an out-of-the-box solution for seamlessly integrating the management of NonStop servers with the OpenView suite of products.

NonStop server performance metrics are now included in OpenView software's end-to-end management for the Adaptive Enterprise.

OpenView NonStop Server Performance Management offers real-time monitoring and trend reporting. It provides comprehensive and robust manageability features along with Web browser support for monitoring critical performance events. It is a highly flexible solution for measuring service level standards and for planning your future business needs. OpenView NonStop Server Performance Management includes components installed on both the NonStop server and the OpenView Operations management server for Windows® or UNIX® systems. The NonStop server component monitors the status and health of the NonStop server and interfaces with the management server component using TCP/IP (see figure 1). OpenView NonStop Server Performance Management also integrates HP OpenView Reporter.

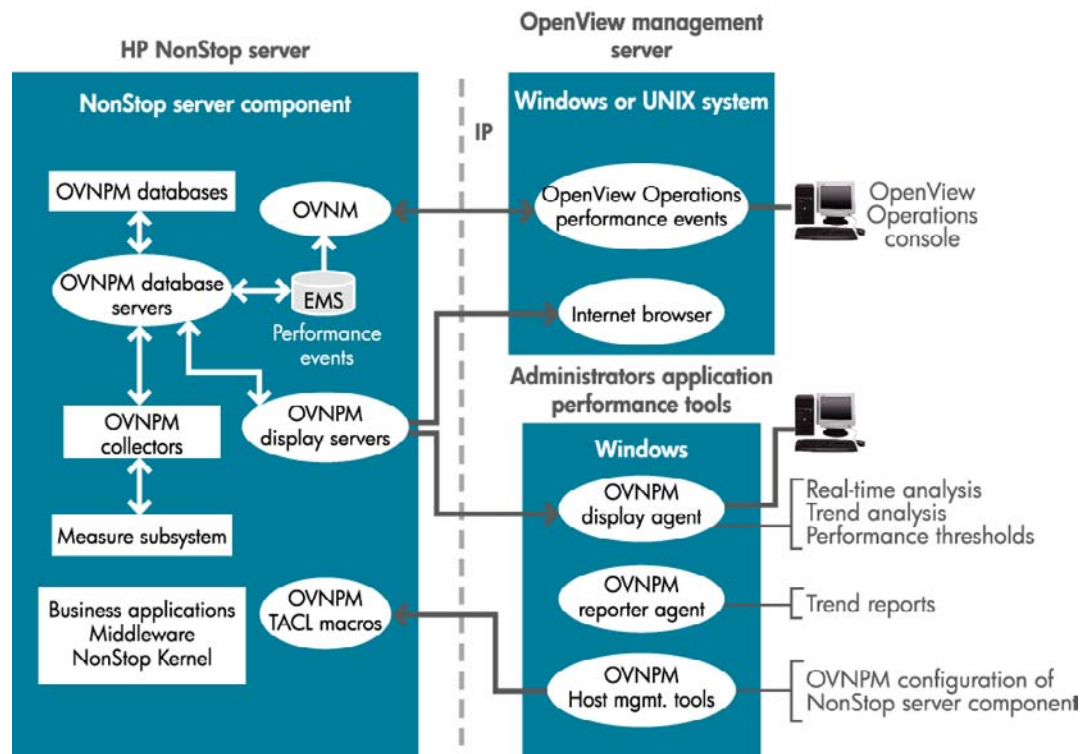


Figure 1.

Architecture of OpenView NonStop Server Performance Management (OVNPM) software, including OpenView NonStop Server Management (OVNM) software, with the NonStop server and OpenView management server components.

Real-time performance monitoring

OpenView NonStop Server Performance Management software provides two display interfaces—the Web browser interface and the Windows display agent—used for performance analysis and visualization. Both interfaces are capable of real-time monitoring of systems, applications, and services.

The Web browser interface enhances the flexibility of monitoring NonStop server performance. Using the Web interface, the operator can quickly access NonStop server performance data and take a drill-down approach in pinpointing performance bottlenecks

whether they be system, database, or application components (see figure 2). The Web-based interface groups real-time performance data by the following domains:

- CPU
- Disk
- Communications
- User ID groups
- Guardian or OSS program name
- Process name
- Application group
- User ID

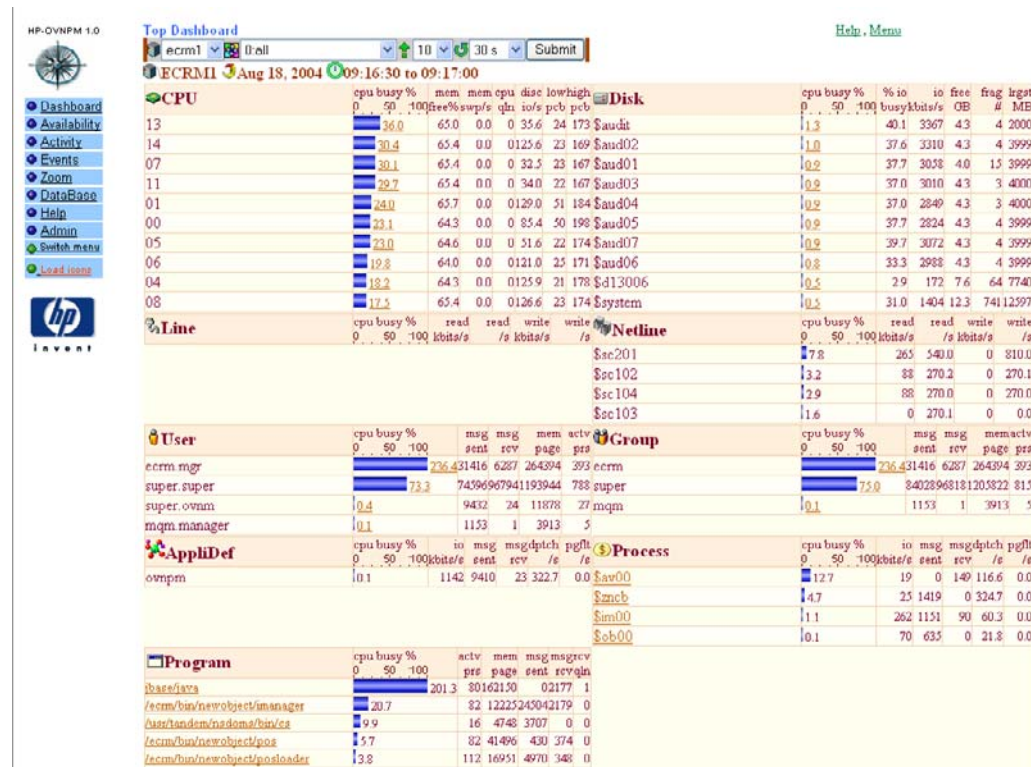


Figure 2. Web browser display interface.

The Windows display agent is designed for advanced performance-related activities (see figure 3). It includes the following functionality:

- Real-time monitoring and replay capabilities
- Performance alerts configuration
- Historical trend analysis
- Automated performance event correlation

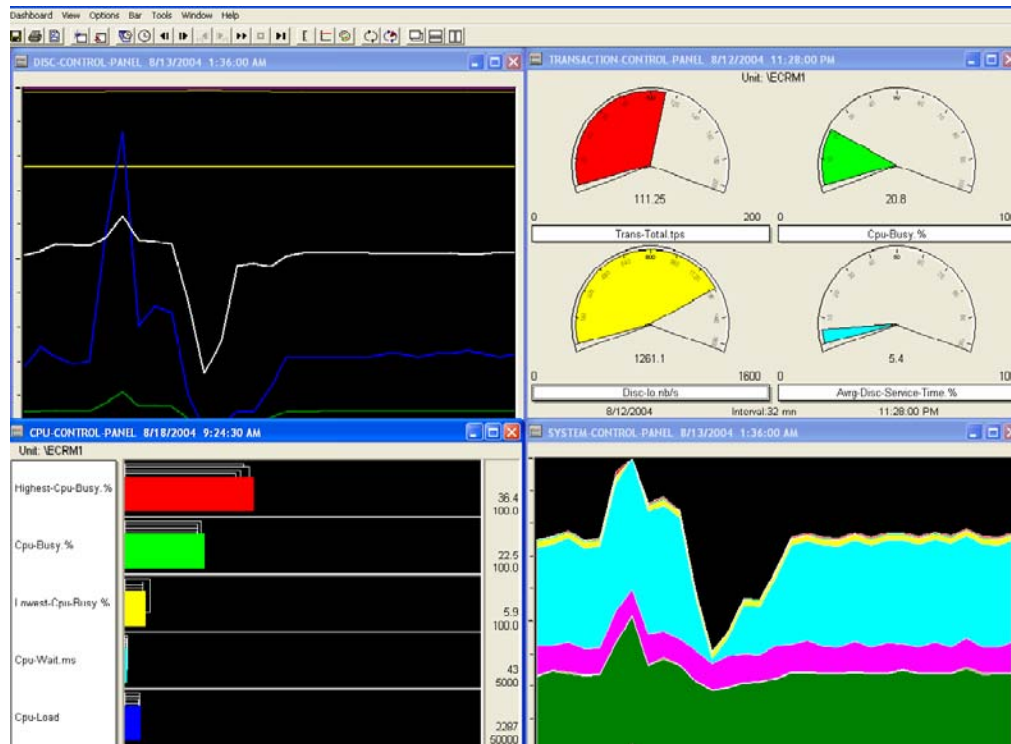


Figure 3.
Windows display agent interface.

Performance alerts

OpenView NonStop Server Performance Management software is able to detect performance exception conditions and generate performance alert events. Exception conditions can be based on application and/or system performance metrics. Alerts can be generated by either an individual metric or a combination of metrics and can be defined using both thresholds and duration.

Alert thresholds are entirely menu driven, and no programming is required to define a performance threshold. Alarm escalation can be achieved by setting multiple alerts with different severity levels and messages for the same metric. Time parameters can be defined for each threshold to prevent alarms from being triggered by spikes.

Historical trend analysis and capacity planning

Information stored in the OpenView NonStop Server Performance Management database can be retrieved to perform trend analysis and to plan future hardware needs. The data can be viewed using histograms or a detailed profile can be generated. Histograms display information for a day, a month, or a year. Profiles show an average day's performance based on the performance metric values for a month or a year. They also highlight peaks in resource consumption.

Business application support

OpenView NonStop Server Performance Management software also provides the ability to group NonStop server performance data. This allows users to define application groups consisting of processes, data files, and other resources, which together perform a specific business function. Using the Web browser interface, the operator can identify performance bottlenecks in real time and immediately know which business function is affected. Support for application groups is also important when analyzing NonStop server performance trends. Application group performance data can greatly assist in determining future application resource requirements.

Integration with HP OpenView solutions

OpenView NonStop Server Performance Management software offers the following integration with the OpenView product suite.

OpenView Operations

OpenView NonStop Server Performance Management software enables performance exception alarms, warning the operator of a NonStop server performance bottleneck, which can be viewed on the OpenView Operations console. The operator can then invoke a Web browser within the OpenView Operations console and immediately access additional detailed NonStop server performance data.

OpenView Reporter

The OpenView Reporter interface provides a component for creating Web-based reports from NonStop server performance data gathered by OpenView NonStop Server Performance Management software. OpenView Reporter collects data based on predefined lists of metrics and formats the collected data into Web-based reports. The reports can include all HP OpenView managed systems and system groups. The data is graphed and displayed in a variety of formats that allow the operator to quickly assess NonStop server performance.

Technical specifications

OpenView NonStop Server Performance Management host component

Hardware	Any HP NonStop server
Software	NonStop Kernel operating system Release Version Update D40.10 or later HP Measure (9086) HP OpenView NonStop Server Management (OV01v1)

OpenView NonStop Server Performance Management client component (management server component)

Hardware	Personal computer (425-megahertz Intel® Pentium® processor or later) configured with a minimum of 128 megabytes of memory and 100 megabytes of disk space NonStop Kernel operating system Release Version Update D40.10 or later
-----------------	---

Software

Microsoft® Windows 95, Windows 98, Windows Me, Windows NT® 4.0, Windows 2000, or Windows XP operating system and OpenView Operations Version 7 or later for Windows

HP-UX 11.00 or 11.x operating system and OpenView Operations Version 7 or later for UNIX

Ordering information

Part number	Product name
OV02v1	OpenView NonStop Server Performance Management software

For more information

To learn more about HP OpenView solutions for NonStop servers, contact your HP sales representative or visit <http://h71033.www7.hp.com/page/OpenView.html>.

HP Financial Services provides innovative financing and financial asset management programs to help you cost-effectively acquire, manage, and ultimately retire your HP solutions. For more information on these services, contact your HP sales representative or visit www.hp.com/go/hpfinancialservices.

HP Customer Support provides a broad spectrum of services to commercial and enterprise customers with performance and availability services, such as proactive mission-critical services, and services ranging from deployment to support management of the entire IT infrastructure, including HP and multivendor environments. For more information on these services, contact your HP sales representative or visit www.hp.com/hps/support.

© Copyright 2004 Hewlett-Packard Development Company, L.P. The information contained herein is subject to change without notice. The only warranties for HP products and services are set forth in the express warranty statements accompanying such products and services. Nothing herein should be construed as constituting an additional warranty. HP shall not be liable for technical or editorial errors or omissions contained herein.

Intel and Pentium are trademarks or registered trademarks of Intel Corporation or its subsidiaries in the United States and other countries. Microsoft, Windows, and Windows NT are U.S. registered trademarks of Microsoft Corporation. UNIX is a registered trademark of The Open Group.

For more information, visit www.hp.com/go/nonstop.
08/2004

